

HECM Lenders (FHA Approved Only)

Industry Overview

HECMs Endorsed through April 2012

Next Release Date: Week 1 of June

Endorsement Growth Change

4.9 %

Competition Growth

-6.3 %

Active Lender Change

-18

Figures above reflect change from prior month

PERFORMANCE

Rank/Region	05/11	06/11	07/11	08/11	09/11	10/11	11/11	12/11	01/12	02/12	03/12	04/12	Trend
1 Southeast/Caribbean	1,184	1,199	1,198	1,175	1,075	1,032	948	1,021	1,155	1,043	851	1,000	▲
2 Pacific/Hawaii	834	918	894	930	935	703	601	619	773	832	703	842	▲
3 Southwest	641	813	731	813	688	614	731	632	721	732	593	556	▼
4 Mid-Atlantic	635	794	738	837	722	601	655	588	610	691	611	575	▼
5 New York/New Jersey	541	612	569	603	625	476	526	524	550	723	546	491	▼
6 Midwest	512	553	511	520	532	459	402	452	488	455	380	361	▼
7 New England	226	285	256	290	301	239	240	283	258	297	210	199	▼
8 Northwest/Alaska	266	307	262	274	307	220	167	188	213	261	186	258	▲
9 Rocky Mountain	211	236	222	230	259	166	249	195	250	244	195	198	▲
10 Great Plains	138	140	130	135	146	143	135	134	157	148	106	115	▲
Total	5,188	5,857	5,511	5,807	5,590	4,653	4,654	4,636	5,175	5,426	4,381	4,595	▲

Find out where the top five markets are in your area by state, county or even zip code to help improve sales performance, market share and maximize opportunities.

Call us for a free briefing at (949) 429-0452.

*Paid Advertisement

Strategically thinking companies rely on ReverseVision

Freedom of Action

ReverseVision is supported by more reverse mortgage lenders than any other software, giving customers maximum *freedom of action*.

Independence

As an independent technology company ReverseVision gives its customers the *flexibility* and *independence* to grow their business.



(949) 429-0452

info@rminight.net

www.rminight.net

Interested in industry commentary, data and analysis? [CLICK HERE](#)

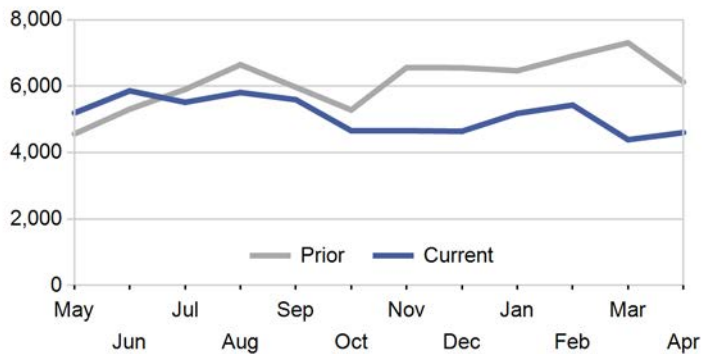
Subscribe to our [FREE ReverseIQ Newsletter](#) and [FREE Industry Reports](#)

Competition

Top 10 Lenders

Rank / Lender	05/11	06/11	07/11	08/11	09/11	10/11	11/11	12/11	01/12	02/12	03/12	04/12	Total	Trend
1 METLIFE BANK	932	1,079	716	936	1,134	913	1,273	1,321	1,379	1,132	929	911	12,655	▼
2 WELLS FARGO BANK NA	1,092	1,639	1,719	1,665	1,447	787	24	70	14	3	1	5	8,466	▲
3 ONE REVERSE MORTGAGE LLC	430	327	328	420	413	446	398	419	439	417	384	407	4,828	▲
4 URBAN FINANCIAL GROUP	362	489	460	301	344	301	284	357	354	350	224	281	4,107	▲
5 GENWORTH FINANCIAL HM EQUITY A	199	228	129	165	225	266	362	306	386	643	345	346	3,600	▲
6 GENERATION MORTGAGE COMPANY	155	220	491	405	299	288	253	209	245	267	241	207	3,280	▼
7 AMERICAN ADVISORS GROUP	124	156	161	198	134	199	244	184	227	186	238	293	2,344	▲
8 SECURITY ONE LENDING	95	123	105	164	185	168	121	172	220	241	234	244	2,072	▲
9 THE FIRST NATIONAL BANK LAYTON	22	35	72	84	74	85	89	124	132	147	126	147	1,137	▲
10 REVERSE MORTGAGE USA INC	50	105	90	56	67	73	107	100	81	111	101	85	1,026	▼
Top 10 SubTotal	3,461	4,401	4,271	4,394	4,322	3,526	3,155	3,262	3,477	3,497	2,823	2,926	43,515	▲
Industry Total	5,188	5,857	5,511	5,807	5,590	4,653	4,654	4,636	5,175	5,426	4,381	4,595	61,473	▲

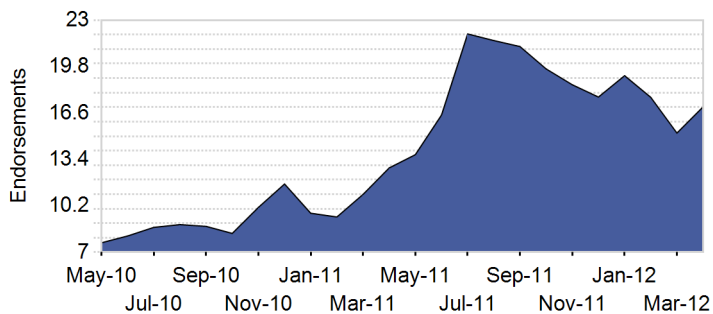
Endorsement Volume



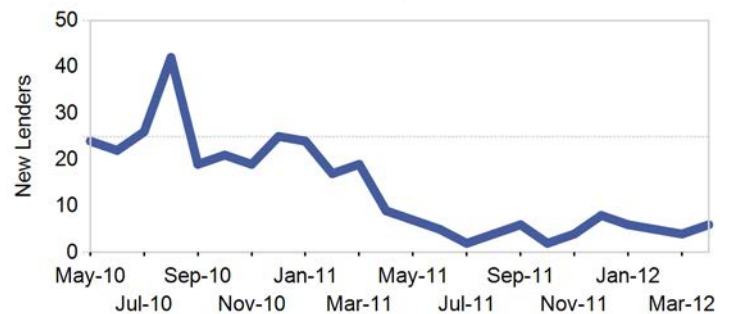
Active Lenders



Endorsements per Lender

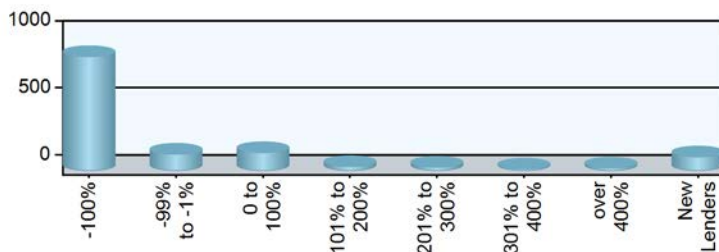


New Lenders by Month



Paid Advertisement

Lender Distribution by YTD Growth Rate



RMS introduces the newest path to success.

RMPATH | **RMS**
Reverse Mortgage Solutions, Inc.

Wholesale Lending • Correspondent Lending • Aggregation Partnering

Market Performance

Market	YTD Volume 2012	YTD Volume 2011	Chg %	Active Lenders 2012	Active Lenders 2011	Chg %	Volume / Lender 2012	Volume / Lender 2011	Chg %
Great Plains									
KANSAS CITY	169	216	-21.8 %	24	26	-7.7 %	3.1	4.2	-26.1 %
DES MOINES	118	127	-7.1 %	15	18	-16.7 %	3.4	4.1	-18.8 %
ST. LOUIS	115	177	-35.0 %	15	31	-51.6 %	3.0	2.9	6.1 %
TOPEKA	74	85	-12.9 %	17	16	6.3 %	2.2	2.6	-16.6 %
OMAHA	50	78	-35.9 %	13	14	-7.1 %	2.0	3.3	-39.9 %
Region Total	526	683	-23.0 %	39	60	-35.0 %	5.5	5.7	-3.0 %
Mid-Atlantic									
PHILADELPHIA	805	1,023	-21.3 %	60	90	-33.3 %	5.9	5.2	14.6 %
RICHMOND	623	997	-37.5 %	57	78	-26.9 %	4.7	5.7	-17.0 %
BALTIMORE	445	756	-41.1 %	50	84	-40.5 %	3.7	4.1	-9.4 %
WASH. D.C.	333	491	-32.2 %	46	60	-23.3 %	3.4	3.6	-7.8 %
PITTSBURGH	126	174	-27.6 %	24	34	-29.4 %	2.4	2.4	0.4 %
WILMINGTON	98	139	-29.5 %	24	32	-25.0 %	2.1	2.2	-1.6 %
CHARLESTON	57	63	-9.5 %	9	14	-35.7 %	3.1	2.0	54.4 %
Region Total	2,487	3,643	-31.7 %	119	190	-37.4 %	8.6	8.1	5.9 %
Midwest									
CHICAGO	427	585	-27.0 %	34	89	-61.8 %	5.2	3.4	53.1 %
INDIANAPOLIS	214	272	-21.3 %	29	40	-27.5 %	3.8	3.6	4.5 %
MILWAUKEE	203	303	-33.0 %	17	32	-46.9 %	4.3	4.2	2.7 %
MINN. ST. PAUL	197	361	-45.4 %	23	35	-34.3 %	3.9	5.1	-24.7 %
CLEVELAND	177	227	-22.0 %	29	29	0.0 %	3.0	3.8	-22.2 %
GRAND RAPIDS	99	145	-31.7 %	15	31	-51.6 %	2.7	2.7	2.2 %
COLUMBUS	93	107	-13.1 %	14	22	-36.4 %	3.0	2.6	13.7 %
SPRINGFIELD	83	104	-20.2 %	18	25	-28.0 %	2.0	2.2	-6.7 %
DETROIT	82	95	-13.7 %	14	22	-36.4 %	2.2	2.4	-7.3 %
CINCINNATI	65	96	-32.3 %	11	25	-56.0 %	2.6	2.1	26.2 %
FLINT	44	43	2.3 %	13	21	-38.1 %	1.7	1.3	29.1 %
Region Total	1,684	2,338	-28.0 %	83	196	-57.7 %	8.9	6.2	43.8 %
New England									
BOSTON	389	572	-32.0 %	19	68	-72.1 %	7.9	4.2	90.8 %
HARTFORD	268	392	-31.6 %	36	55	-34.5 %	3.7	3.5	4.6 %
BANGOR	104	131	-20.6 %	18	18	0.0 %	3.4	3.7	-8.8 %
MANCHESTER	84	112	-25.0 %	16	23	-30.4 %	2.4	2.6	-5.6 %
PROVIDENCE	82	95	-13.7 %	9	21	-57.1 %	3.4	2.2	53.0 %
BURLINGTON	37	44	-15.9 %	6	10	-40.0 %	2.4	3.0	-22.1 %
Region Total	964	1,346	-28.4 %	56	120	-53.3 %	7.5	5.5	36.2 %
New York/New Jersey									
NEW YORK	1,078	1,152	-6.4 %	56	108	-48.1 %	7.7	4.9	58.2 %
NEWARK	445	652	-31.7 %	56	71	-21.1 %	3.5	4.8	-25.7 %
CAMDEN	389	494	-21.3 %	55	60	-8.3 %	3.3	3.8	-12.8 %
ALBANY	276	292	-5.5 %	25	36	-30.6 %	4.5	3.3	37.8 %
BUFFALO	122	147	-17.0 %	17	18	-5.6 %	3.5	3.8	-5.8 %
Region Total	2,310	2,737	-15.6 %	100	172	-41.9 %	9.4	6.8	38.3 %
Northwest/Alaska									
SEATTLE	375	620	-39.5 %	41	69	-40.6 %	3.6	3.9	-8.3 %
PORTLAND	361	505	-28.5 %	37	75	-50.7 %	3.8	3.2	18.0 %
BOISE	107	174	-38.5 %	22	38	-42.1 %	2.3	2.9	-21.2 %
SPOKANE	59	93	-36.6 %	18	26	-30.8 %	1.4	1.9	-25.0 %
ANCHORAGE	16	34	-52.9 %	6	5	20.0 %	1.4	4.3	-68.3 %
Region Total	918	1,426	-35.6 %	64	121	-47.1 %	5.8	5.3	9.4 %
Pacific/Hawaii									
LOS ANGELES	887	1,250	-29.0 %	60	136	-55.9 %	7.2	5.0	43.5 %

Market	YTD Volume 2012	YTD Volume 2011	Chg %	Active Lenders 2012	Active Lenders 2011	Chg %	Volume / Lender 2012	Volume / Lender 2011	Chg %
SANTA ANA	570	793	-28.1 %	54	107	-49.5 %	5.3	3.9	36.5 %
SAN FRANCISCO	513	856	-40.1 %	40	85	-52.9 %	5.6	5.0	12.2 %
PHOENIX	288	403	-28.5 %	32	45	-28.9 %	4.3	4.4	-3.4 %
SAN DIEGO	284	405	-29.9 %	33	71	-53.5 %	4.5	3.3	35.0 %
SACRAMENTO	237	393	-39.7 %	32	60	-46.7 %	3.5	3.7	-6.0 %
FRESNO	109	145	-24.8 %	21	34	-38.2 %	2.2	2.4	-5.5 %
HONOLULU	87	127	-31.5 %	11	31	-64.5 %	3.0	2.3	31.9 %
LAS VEGAS	75	106	-29.2 %	15	17	-11.8 %	2.3	3.2	-30.5 %
TUCSON	65	108	-39.8 %	18	15	20.0 %	1.6	3.0	-46.5 %
RENO	35	52	-32.7 %	12	11	9.1 %	1.7	2.5	-32.1 %
Region Total	3,150	4,638	-32.1 %	113	286	-60.5 %	11.7	8.2	42.8 %
Rocky Mountain									
SALT LAKE CITY	394	373	5.6 %	29	60	-51.7 %	5.1	2.8	86.6 %
DENVER	350	477	-26.6 %	31	59	-47.5 %	4.6	4.1	11.6 %
HELENA	75	124	-39.5 %	15	20	-25.0 %	2.1	2.6	-19.6 %
CASPER	42	50	-16.0 %	13	13	0.0 %	1.6	2.2	-26.8 %
SIOUX FALLS	18	39	-53.8 %	3	8	-62.5 %	2.9	3.6	-20.2 %
FARGO	8	19	-57.9 %	3	1	200.0 %	1.8	4.8	-61.4 %
Region Total	887	1,082	-18.0 %	59	113	-47.8 %	6.2	4.3	44.5 %
Southeast/Caribbean									
GREENSBORO	573	715	-19.9 %	27	20	35.0 %	7.8	12.4	-36.9 %
CARIBBEAN	522	568	-8.1 %	19	16	18.8 %	9.0	11.6	-22.3 %
MIAMI	503	685	-26.6 %	51	107	-52.3 %	4.4	3.5	27.1 %
ATLANTA	358	664	-46.1 %	31	64	-51.6 %	5.0	4.8	4.6 %
BIRMINGHAM	320	407	-21.4 %	28	41	-31.7 %	4.4	4.7	-4.9 %
COLUMBIA	296	451	-34.4 %	32	37	-13.5 %	3.8	5.6	-32.2 %
JACKSONVILLE	268	400	-33.0 %	33	78	-57.7 %	3.6	2.7	35.5 %
TAMPA	264	473	-44.2 %	36	80	-55.0 %	3.5	3.4	3.3 %
KNOXVILLE	220	211	4.3 %	27	35	-22.9 %	3.9	3.0	30.0 %
ORLANDO	185	294	-37.1 %	31	69	-55.1 %	2.7	2.9	-8.6 %
NASHVILLE	171	151	13.2 %	24	30	-20.0 %	3.1	2.5	20.5 %
JACKSON	160	186	-14.0 %	15	24	-37.5 %	4.1	3.9	6.7 %
LOUISVILLE	142	157	-9.6 %	17	29	-41.4 %	3.9	2.9	33.7 %
MEMPHIS	67	88	-23.9 %	18	22	-18.2 %	1.9	2.1	-10.8 %
Region Total	4,049	5,450	-25.7 %	135	312	-56.7 %	12.0	8.5	40.9 %
Southwest									
HOUSTON	483	615	-21.5 %	36	40	-10.0 %	5.1	6.4	-20.5 %
DALLAS	361	455	-20.7 %	37	56	-33.9 %	4.0	4.0	0.5 %
SAN ANTONIO	358	588	-39.1 %	38	53	-28.3 %	4.1	5.3	-22.8 %
FT. WORTH	309	457	-32.4 %	39	57	-31.6 %	3.4	3.9	-12.9 %
NEW ORLEANS	287	352	-18.5 %	23	40	-42.5 %	4.5	3.4	33.1 %
LITTLE ROCK	183	261	-29.9 %	21	29	-27.6 %	3.6	3.8	-3.7 %
LUBBOCK	172	192	-10.4 %	30	30	0.0 %	2.8	3.0	-6.3 %
ALBUQUERQUE	153	233	-34.3 %	26	32	-18.8 %	2.5	3.0	-16.6 %
OKLAHOMA CITY	120	120	0.0 %	18	18	0.0 %	3.1	2.8	11.6 %
TULSA	110	112	-1.8 %	13	20	-35.0 %	3.7	2.6	41.5 %
SHREVEPORT	66	70	-5.7 %	15	18	-16.7 %	1.8	2.1	-14.1 %
Region Total	2,602	3,455	-24.7 %	86	151	-43.0 %	11.7	10.1	16.6 %
Grand Total	19,577	26,798	-26.9 %	443	1,188	-62.7 %	17.3	10.7	60.9 %

Analyze your top competitors and leverage the competitive strategies that work for them. Call us for a free, no obligation, Competitive Landscape Report at (949) 429-0452.

Top 100 Lenders - Year to Date

Rank	Lender	Vol 2012	Vol 2011	Chg %	Mkt Share 2012	Mkt Share 2011	Chg %	Top State
1	METLIFE BANK	4351	2208	97 %	22.2 %	8.2 %	170 %	CA
2	GENWORTH FINANCIAL HM EQ	1720	430	300 %	8.8 %	1.6 %	448 %	CA
3	ONE REVERSE MORTGAGE LLC	1647	1438	15 %	8.4 %	5.4 %	57 %	TX
4	URBAN FINANCIAL GROUP	1209	832	45 %	6.2 %	3.1 %	99 %	CA
5	GENERATION MORTGAGE COMP	960	691	39 %	4.9 %	2.6 %	90 %	PA
6	AMERICAN ADVISORS GROUP	944	415	127 %	4.8 %	1.5 %	211 %	TX
7	SECURITY ONE LENDING	939	360	161 %	4.8 %	1.3 %	257 %	CA
8	THE FIRST NATIONAL BANK	552	178	210 %	2.8 %	0.7 %	324 %	CA
9	SUN WEST MORTGAGE CO INC	528	96	450 %	2.7 %	0.4 %	653 %	CA
10	REVERSE MORTGAGE USA INC	378	319	18 %	1.9 %	1.2 %	62 %	TX
11	NEW DAY FINANCIAL LLC	251	244	3 %	1.3 %	0.9 %	41 %	NJ
12	CHERRY CREEK MORTGAGE CO	227	74	207 %	1.2 %	0.3 %	320 %	UT
13	M & T BANK	199	214	-7 %	1.0 %	0.8 %	27 %	NY
14	SENIOR MORTGAGE BANKERS	169	198	-15 %	0.9 %	0.7 %	17 %	ZZ
15	MONEY HOUSE INC	154	177	-13 %	0.8 %	0.7 %	19 %	ZZ
16	ROYAL UNITED MORTGAGE LL	134	99	35 %	0.7 %	0.4 %	85 %	TX
17	PLAZA HOME MORTGAGE INC	126	42	200 %	0.6 %	0.2 %	311 %	CA
18	NET EQUITY FINANCIAL INC	115	171	-33 %	0.6 %	0.6 %	-8 %	DC
19	GREENLIGHT FINANCIAL SER	114	1	11,300 %	0.6 %	0.0 %	15,505 %	CA
20	NATIONWIDE EQUITIES CORP	111	67	66 %	0.6 %	0.3 %	127 %	NY
21	ASPIRE FINANCIAL INC	108	94	15 %	0.6 %	0.4 %	57 %	TX
22	GREAT OAK LENDING	106	200	-47 %	0.5 %	0.7 %	-27 %	MD
23	OPEN MORTGAGE LLC	104	52	100 %	0.5 %	0.2 %	174 %	CA
24	ATLANTIC BAY MORTGAGE GR	99	26	281 %	0.5 %	0.1 %	421 %	VA
25	MCM HOLDINGS INC	96	21	357 %	0.5 %	0.1 %	526 %	FL
26	MAVERICK FUNDING CORP	91	0		0.5 %	0.0 %		NJ
27	ASSOCIATED MORTGAGE BANK	91	2	4,450 %	0.5 %	0.0 %	6,128 %	NY
28	MAS ASSOCIATES LLC	87	75	16 %	0.4 %	0.3 %	59 %	MD
29	FIRSTBANK	82	0		0.4 %	0.0 %		AL
30	REVERSE MORTGAGE SOLUTIO	82	58	41 %	0.4 %	0.2 %	94 %	TX
31	GMFS LLC	78	43	81 %	0.4 %	0.2 %	148 %	LA
32	UNITED NORTHERN MORTGAGE	76	27	181 %	0.4 %	0.1 %	285 %	NY
33	SIDUS FINANCIAL LLC	73	40	83 %	0.4 %	0.1 %	150 %	NC
34	STERLING SAVINGS BANK	65	23	183 %	0.3 %	0.1 %	287 %	OR
35	TOWNEBANK	64	24	167 %	0.3 %	0.1 %	265 %	VA
36	CONTOUR MORTGAGE CORPORA	59	8	638 %	0.3 %	0.0 %	910 %	NY
37	HARVARD HOME MORTGAGE IN	58	40	45 %	0.3 %	0.1 %	98 %	NC
38	SUN AMERICAN MORTGAGE CO	57	46	24 %	0.3 %	0.2 %	70 %	AZ
39	PRIMELENDING A PLAINSCAP	53	96	-45 %	0.3 %	0.4 %	-24 %	VA
40	NETWORK FUNDING LP	53	50	6 %	0.3 %	0.2 %	45 %	TX
41	COMMUNITY FIRST BANK	51	8	538 %	0.3 %	0.0 %	773 %	SC
42	JAMES B NUTTER AND COMPA	51	36	42 %	0.3 %	0.1 %	94 %	KS
43	FULTON BANK NATIONAL ASS	50	39	28 %	0.3 %	0.1 %	75 %	PA
44	CHRISTENSEN FINANCIAL IN	48	57	-16 %	0.2 %	0.2 %	15 %	FL
45	WEST TOWN SAVINGS BANK	46	22	109 %	0.2 %	0.1 %	186 %	NC
46	UNIVERSAL LENDING CORPOR	46	40	15 %	0.2 %	0.1 %	57 %	CO
47	GATEWAY FUNDING DIVERSIF	45	36	25 %	0.2 %	0.1 %	71 %	PA
48	TOP FLITE FINANCIAL INC	45	14	221 %	0.2 %	0.1 %	340 %	FL
49	NEW AMERICAN MORTGAGE LL	44	23	91 %	0.2 %	0.1 %	162 %	VA
50	VALUE FINANCIAL MORTGAGE	44	26	69 %	0.2 %	0.1 %	132 %	FL

Rank	Lender	Vol 2012	Vol 2011	Chg %	Mkt Share 2012	Mkt Share 2011	Chg %	Top State
51	AMERICAN PACIFIC MORTGAG	44	52	-15 %	0.2 %	0.2 %	16 %	CA
52	HIGH TECH LENDING INC	43	20	115 %	0.2 %	0.1 %	194 %	CA
53	CONTINENTAL HOME LOANS I	43	11	291 %	0.2 %	0.0 %	435 %	NY
54	AXIA FINANCIAL LLC	42	10	320 %	0.2 %	0.0 %	475 %	WA
55	EQUIPOINT FINANCIAL NETW	41	138	-70 %	0.2 %	0.5 %	-59 %	TX
56	VANGUARD FUNDING LLC	40	20	100 %	0.2 %	0.1 %	174 %	NY
57	VIG MORTGAGE CORP	39	36	8 %	0.2 %	0.1 %	48 %	ZZ
58	OCEANFIRST BANK	38	30	27 %	0.2 %	0.1 %	73 %	NJ
59	VAN DYK MORTGAGE CORPORA	36	19	89 %	0.2 %	0.1 %	159 %	TX
60	PRIMARY RESIDENTIAL MORT	35	42	-17 %	0.2 %	0.2 %	14 %	TN
61	SOUTHERN TRUST MORTGAGE	34	19	79 %	0.2 %	0.1 %	145 %	VA
62	DAS ACQUISITION CO LLC	32	1	3,100 %	0.2 %	0.0 %	4,280 %	MO
63	ADVISORS MORTGAGE GROUP	32	8	300 %	0.2 %	0.0 %	448 %	NY
64	METRO ISLAND MORTGAGE IN	32	33	-3 %	0.2 %	0.1 %	33 %	ZZ
65	LIVE WELL FINANCIAL INC	31	24	29 %	0.2 %	0.1 %	77 %	HI
66	ENVOY MORTGAGE LTD	31	48	-35 %	0.2 %	0.2 %	-12 %	WI
67	MORTGAGE SERVICES III LL	29	21	38 %	0.1 %	0.1 %	89 %	IL
68	SUCCESS MORTGAGE PARTNER	29	23	26 %	0.1 %	0.1 %	73 %	MI
69	FIRST CENTURY BANK NA	25	13	92 %	0.1 %	0.0 %	163 %	FL
70	DOLLAR BANK FSB	25	4	525 %	0.1 %	0.0 %	756 %	OH
71	CLIFFCO INC	25	6	317 %	0.1 %	0.0 %	470 %	NY
72	PEOPLES BANK	25	3	733 %	0.1 %	0.0 %	1,041 %	NM
73	FIRST LIBERTY FINANCIAL	24	2	1,100 %	0.1 %	0.0 %	1,543 %	OH
74	WHOLESALE CAPITAL CORP	24	25	-4 %	0.1 %	0.1 %	31 %	CA
75	WELLS FARGO BANK NA	23	6562	-100 %	0.1 %	24.5 %	-100 %	NJ
76	HAMILTON GROUP FUNDING I	22	6	267 %	0.1 %	0.0 %	402 %	FL
77	EASTERN BANK	22	14	57 %	0.1 %	0.1 %	115 %	MA
78	RESIDENTIAL HOME FUNDING	21	11	91 %	0.1 %	0.0 %	161 %	NY
79	EQUITY LOANS LLC	21	7	200 %	0.1 %	0.0 %	311 %	NJ
80	PINNACLE CAPITAL MORTGAG	20	30	-33 %	0.1 %	0.1 %	-9 %	WA
81	GUILD MORTGAGE COMPANY	20	24	-17 %	0.1 %	0.1 %	14 %	MT
82	GUARANTEED HOME MTG CO I	20	33	-39 %	0.1 %	0.1 %	-17 %	NY
83	AMERICAN PORTFOLIO MORTG	20	0		0.1 %	0.0 %		IL
84	FRANKLIN FIRST FINANCIAL	20	24	-17 %	0.1 %	0.1 %	14 %	NY
85	MAIN STREET FINANCIAL IN	20	4	400 %	0.1 %	0.0 %	584 %	MS
86	GERSHMAN INVESTMENT CORP	19	23	-17 %	0.1 %	0.1 %	13 %	MO
87	FAIRWAY INDEPENDENT MORT	18	8	125 %	0.1 %	0.0 %	208 %	AZ
88	PEOPLES HOME EQUITY INC	18	13	38 %	0.1 %	0.0 %	90 %	TN
89	HOMESTREET BANK	18	4	350 %	0.1 %	0.0 %	516 %	WA
90	CBC NATIONAL BANK	18	0		0.1 %	0.0 %		TX
91	UNIVERSAL MORTGAGE AND F	17	1	1,600 %	0.1 %	0.0 %	2,227 %	FL
92	SIERRA PACIFIC MORTGAGE	17	17	0 %	0.1 %	0.1 %	37 %	CA
93	DIRECTORS FINANCIAL GROU	17	2	750 %	0.1 %	0.0 %	1,064 %	CA
94	MAIN STREET HOME LOANS L	17	0		0.1 %	0.0 %		GA
95	STEARNS LENDING INC	17	11	55 %	0.1 %	0.0 %	112 %	NM
96	WILMINGTON SAVINGS FD SO	17	28	-39 %	0.1 %	0.1 %	-17 %	DE
97	POPULAR MORTGAGE INC	16	2	700 %	0.1 %	0.0 %	995 %	ZZ
98	CENDERA FUNDING INC	16	5	220 %	0.1 %	0.0 %	338 %	TX
99	REAL ESTATE MORTGAGE NET	16	11	45 %	0.1 %	0.0 %	99 %	NJ
100	BANK OF ENGLAND	16	6	167 %	0.1 %	0.0 %	265 %	NC

Paid Advertisement

Are you on a hunt to find an experienced reverse mortgage title and settlement company?

PRC
PREMIER REVERSE CLOSINGS
800.542.4113 | www.PRClosings.com

About Reverse Market Insight, Inc.
Reverse Market Insight (RMI) is the premier provider of market intelligence and strategic advisory solutions in the reverse mortgage marketplace.

RMI is proud to serve 8 of the top 10 reverse mortgage lenders as clients and is the exclusive strategic partner of the National Reverse Mortgage Lenders Association (NRMLA) for market intelligence.

31 Journey | Suite 110 | Aliso Viejo, CA 92656
(949) 429-0452
<http://www.rminight.net>

Disclaimer: Although a significant effort is made to assure the accuracy and completeness of the information provided, Reverse Market Insight, Inc. makes no express or implied warranty as to the accuracy, adequacy, completeness, legality of the information. Reverse Market Insight, Inc. does not endorse any products or services advertised on this report. We also waive any liability of any loss or damage that may be incurred as a result of the use of such advertised products or services.