

HECM Lenders (FHA Approved Only)

Industry Overview

HECMs Endorsed through November 2013

Next Release Date: Week 1 of January

Endorsement Growth Change

12.0 %

Competition Growth

18.3 %

Active Lender Change

42

Figures above reflect change from prior month

PERFORMANCE

Rank/Region	12/12	01/13	02/13	03/13	04/13	05/13	06/13	07/13	08/13	09/13	10/13	11/13	Trend
1 Southeast/Caribbean	879	1,192	1,063	1,227	1,233	1,180	1,090	1,124	1,161	986	958	947	▼
2 Pacific/Hawaii	573	770	851	953	1,016	1,049	940	1,216	1,021	861	873	1,079	▲
3 Southwest	531	669	576	725	715	735	869	779	675	595	567	543	▼
4 Mid-Atlantic	474	686	587	733	675	582	601	629	624	531	412	545	▲
5 New York/New Jersey	408	523	459	670	637	516	528	567	547	422	343	435	▲
6 Midwest	373	453	504	590	489	406	459	505	518	418	398	391	▼
7 Rocky Mountain	200	263	201	253	317	264	280	285	235	204	192	243	▲
8 New England	187	255	226	289	302	231	236	250	254	205	177	208	▲
9 Northwest/Alaska	170	232	208	260	248	251	202	258	200	203	176	185	▲
10 Great Plains	117	146	158	140	138	138	167	143	147	102	92	114	▲
Total	3,912	5,189	4,833	5,840	5,770	5,352	5,372	5,756	5,382	4,527	4,188	4,690	▲

Find out where the top five markets are in your area by state, county or even zip code to help improve sales performance, market share and maximize opportunities.

Call us for a free briefing at (682) 651-5632.

*Paid Advertisement



Is it time to shift into reverse?

Learn why thousands of trusted brokers, lenders, principal agents and investors use **REVERSEVISION** technology to close more than **half of all reverse loans**.

REVERSEVISION 919.834.0070
info@reversevision.com

DRIVING THE REVERSE MORTGAGE INDUSTRY SINCE 2007.



REVERSE MARKET
INSIGHT

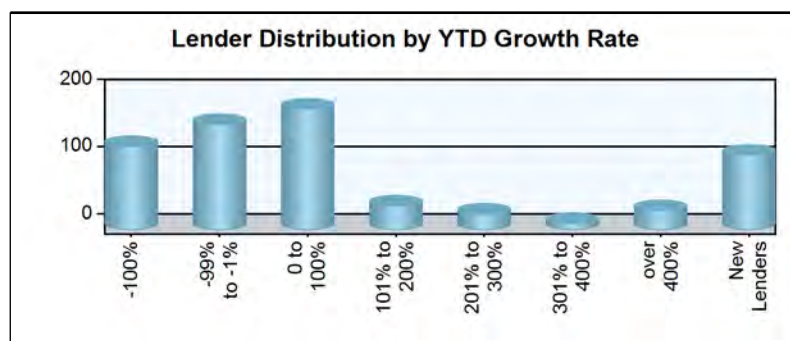
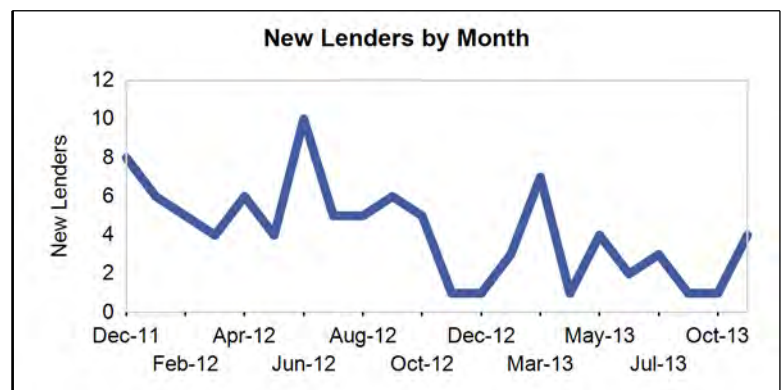
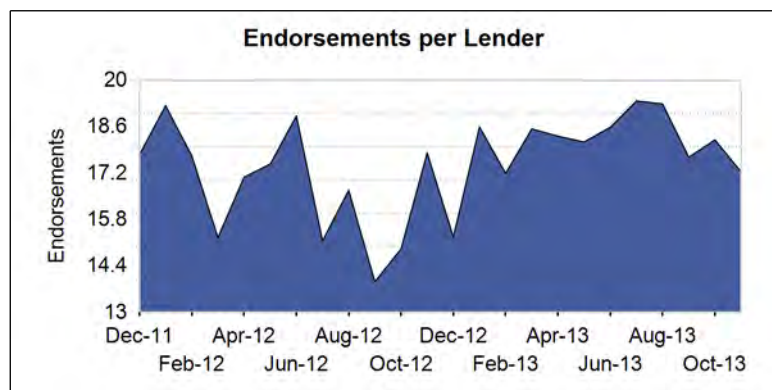
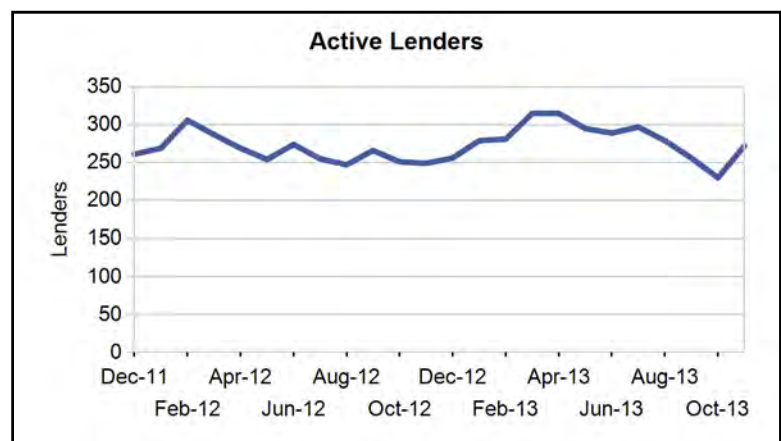
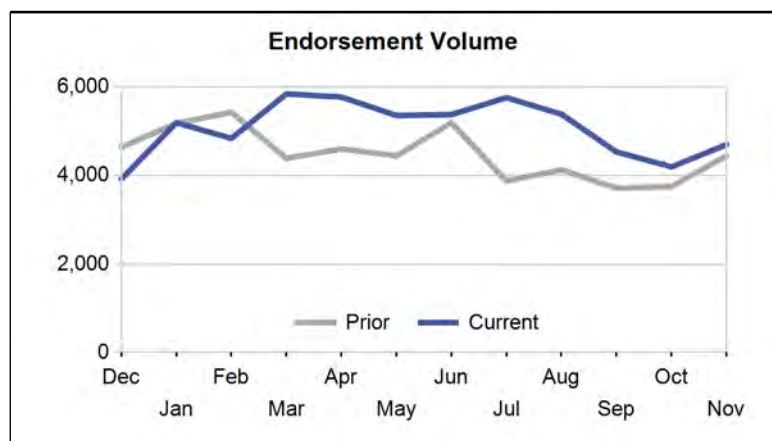
(682) 651-5632
info@rminsight.net
www.rminsight.net

Interested in industry commentary, data and analysis? [CLICK HERE](#)
Subscribe to our [FREE ReverseIQ Newsletter](#) and [FREE Industry Reports](#)

Competition

Top 10 Lenders

Rank / Lender	12/12	01/13	02/13	03/13	04/13	05/13	06/13	07/13	08/13	09/13	10/13	11/13	Total	Trend
1 SECURITY ONE LENDING/RMS	451	690	755	713	779	615	536	592	570	604	442	564	7,311	▲
2 AMERICAN ADVISORS GROUP	282	540	387	514	444	294	517	914	925	773	801	683	7,074	▼
3 LIBERTY HOME EQUITY SOLUTIONS INC	573	764	681	857	621	510	618	645	658	407	257	471	7,062	▲
4 ONE REVERSE MORTGAGE LLC	412	458	421	468	517	478	459	429	465	452	407	475	5,441	▲
5 URBAN FINANCIAL GROUP	195	226	223	334	486	499	365	389	277	301	308	334	3,937	▲
6 GENERATION MORTGAGE COMPANY	246	244	239	237	211	250	284	282	196	167	184	95	2,635	▼
7 PROFICIO MORTGAGE VENTURES LLC	123	172	146	204	296	319	283	254	199	162	210	158	2,526	▼
8 REVERSE MORTGAGE USA INC	92	157	74	175	137	123	238	127	107	127	100	100	1,557	▼
9 ASSOCIATED MORTGAGE BANKERS INC	71	68	66	96	79	78	74	78	69	69	45	49	842	▲
10 SUN WEST MORTGAGE CO INC	21	76	54	77	118	129	67	82	43	33	57	77	834	▲
Top 10 SubTotal	2,466	3,395	3,046	3,675	3,688	3,295	3,441	3,792	3,509	3,095	2,811	3,006	39,219	▲
Industry Total	3,912	5,189	4,833	5,840	5,770	5,352	5,372	5,756	5,382	4,527	4,188	4,690	60,811	▲



Paid Advertisement

RMS introduces the newest path to success.

RMPATH | **RMS**
Reverse Mortgage Solutions, Inc.

Wholesale Lending • Correspondent Lending • Aggregation Partnering

Market Performance

Market	YTD Volume 2013	YTD Volume 2012	Chg %	Active Lenders 2013	Active Lenders 2012	Chg %	Volume / Lender 2013	Volume / Lender 2012	Chg %
Great Plains									
KANSAS CITY	456	391	16.6 %	31	30	3.3 %	3.0	2.8	7.7 %
ST. LOUIS	361	296	22.0 %	25	24	4.2 %	2.8	2.8	-1.8 %
DES MOINES	289	260	11.2 %	19	19	0.0 %	3.1	2.9	6.0 %
TOPEKA	196	182	7.7 %	21	23	-8.7 %	2.0	2.0	1.1 %
OMAHA	183	133	37.6 %	15	16	-6.3 %	2.2	1.9	13.8 %
Region Total	1,485	1,262	17.7 %	43	51	-15.7 %	5.7	5.0	12.5 %
Mid-Atlantic									
PHILADELPHIA	2,074	1,977	4.9 %	86	86	0.0 %	5.1	5.2	-1.0 %
RICHMOND	1,513	1,472	2.8 %	66	70	-5.7 %	4.6	4.3	5.6 %
BALTIMORE	1,092	1,100	-0.7 %	58	63	-7.9 %	4.1	3.8	7.4 %
WASH. D.C.	932	835	11.6 %	60	63	-4.8 %	3.8	3.2	17.5 %
PITTSBURGH	556	372	49.5 %	40	35	14.3 %	3.1	2.6	20.3 %
CHARLESTON	222	166	33.7 %	21	17	23.5 %	2.6	2.9	-10.3 %
WILMINGTON	216	251	-13.9 %	34	37	-8.1 %	1.7	1.9	-9.2 %
Region Total	6,605	6,173	7.0 %	135	150	-10.0 %	9.0	8.2	9.8 %
Midwest									
CHICAGO	1,120	1,029	8.8 %	53	49	8.2 %	4.7	4.9	-3.6 %
INDIANAPOLIS	746	599	24.5 %	43	43	0.0 %	3.7	3.8	-3.1 %
MINN. ST. PAUL	552	439	25.7 %	33	34	-2.9 %	3.3	3.1	6.3 %
CLEVELAND	519	442	17.4 %	33	37	-10.8 %	3.1	3.1	1.1 %
MILWAUKEE	516	493	4.7 %	37	29	27.6 %	2.8	3.3	-14.7 %
COLUMBUS	413	296	39.5 %	33	30	10.0 %	3.1	3.0	2.5 %
GRAND RAPIDS	356	292	21.9 %	32	22	45.5 %	2.6	2.9	-12.0 %
SPRINGFIELD	273	234	16.7 %	27	22	22.7 %	2.5	2.3	5.7 %
DETROIT	271	193	40.4 %	24	23	4.3 %	2.4	2.0	18.7 %
CINCINNATI	259	182	42.3 %	26	21	23.8 %	2.5	2.4	1.4 %
FLINT	106	87	21.8 %	18	17	5.9 %	1.6	1.6	5.1 %
Region Total	5,131	4,286	19.7 %	117	114	2.6 %	8.7	8.3	4.7 %
New England									
BOSTON	1,181	903	30.8 %	44	29	51.7 %	7.1	6.7	4.9 %
HARTFORD	707	672	5.2 %	50	53	-5.7 %	3.4	3.6	-4.2 %
BANGOR	265	243	9.1 %	21	27	-22.2 %	2.4	2.7	-9.9 %
MANCHESTER	214	208	2.9 %	28	25	12.0 %	2.1	2.3	-8.3 %
PROVIDENCE	159	166	-4.2 %	20	14	42.9 %	2.5	2.8	-10.0 %
BURLINGTON	107	88	21.6 %	13	11	18.2 %	2.2	2.4	-9.9 %
Region Total	2,633	2,280	15.5 %	89	79	12.7 %	6.6	7.0	-5.9 %
New York/New Jersey									
NEW YORK	2,595	2,492	4.1 %	72	65	10.8 %	6.8	7.2	-5.4 %
NEWARK	1,173	1,038	13.0 %	81	81	0.0 %	3.5	3.3	7.2 %
CAMDEN	917	903	1.6 %	79	72	9.7 %	3.1	3.1	-1.3 %
ALBANY	631	610	3.4 %	32	37	-13.5 %	3.9	3.9	-0.5 %
BUFFALO	331	339	-2.4 %	20	20	0.0 %	3.8	3.9	-4.3 %
Region Total	5,647	5,382	4.9 %	135	119	13.4 %	8.0	8.6	-7.2 %
Northwest/Alaska									
SEATTLE	1,121	991	13.1 %	60	59	1.7 %	3.8	3.6	4.6 %
PORTLAND	777	816	-4.8 %	53	54	-1.9 %	3.2	3.3	-2.3 %
BOISE	305	277	10.1 %	33	34	-2.9 %	2.1	2.2	-6.0 %
SPOKANE	162	174	-6.9 %	37	29	27.6 %	1.6	1.6	1.1 %
ANCHORAGE	58	48	20.8 %	11	10	10.0 %	1.6	1.4	11.3 %
Region Total	2,423	2,306	5.1 %	85	89	-4.5 %	5.5	5.6	-2.1 %
Pacific/Hawaii									
LOS ANGELES	2,660	2,133	24.7 %	90	83	8.4 %	6.4	6.4	0.9 %

Market	YTD Volume 2013	YTD Volume 2012	Chg %	Active Lenders 2013	Active Lenders 2012	Chg %	Volume / Lender 2013	Volume / Lender 2012	Chg %
SANTA ANA	2,031	1,460	39.1 %	86	73	17.8 %	5.5	5.5	-0.4 %
SAN FRANCISCO	1,719	1,244	38.2 %	70	59	18.6 %	5.6	5.2	9.1 %
PHOENIX	1,197	727	64.6 %	51	47	8.5 %	4.9	4.0	22.2 %
SAN DIEGO	938	708	32.5 %	60	50	20.0 %	4.3	4.0	7.5 %
SACRAMENTO	841	587	43.3 %	58	47	23.4 %	3.8	3.7	4.2 %
FRESNO	355	250	42.0 %	38	33	15.2 %	2.4	2.0	24.5 %
LAS VEGAS	303	181	67.4 %	24	20	20.0 %	2.5	1.9	32.1 %
TUCSON	247	171	44.4 %	29	26	11.5 %	2.0	1.8	10.6 %
HONOLULU	224	213	5.2 %	19	18	5.6 %	2.5	2.6	-5.1 %
RENO	114	91	25.3 %	15	16	-6.3 %	1.8	1.6	16.2 %
Region Total	10,629	7,765	36.9 %	158	157	0.6 %	12.4	11.3	9.9 %
Rocky Mountain									
DENVER	1,187	1,003	18.3 %	55	49	12.2 %	5.1	5.1	0.0 %
SALT LAKE CITY	1,132	897	26.2 %	37	37	0.0 %	5.4	4.7	13.6 %
HELENA	236	196	20.4 %	16	23	-30.4 %	2.5	2.1	21.6 %
CASPER	101	111	-9.0 %	17	22	-22.7 %	1.6	1.6	-2.9 %
SIOUX FALLS	53	42	26.2 %	9	8	12.5 %	1.7	2.0	-15.1 %
FARGO	28	27	3.7 %	7	7	0.0 %	1.3	1.5	-10.6 %
Region Total	2,737	2,276	20.3 %	79	86	-8.1 %	6.7	6.3	5.7 %
Southeast/Caribbean									
GREENSBORO	1,679	1,422	18.1 %	38	41	-7.3 %	6.6	6.4	4.2 %
MIAMI	1,499	1,189	26.1 %	84	72	16.7 %	4.1	3.9	5.0 %
CARIBBEAN	1,296	1,387	-6.6 %	24	23	4.3 %	8.7	8.4	2.8 %
ATLANTA	1,111	966	15.0 %	50	47	6.4 %	4.9	4.6	6.6 %
COLUMBIA	1,043	813	28.3 %	55	44	25.0 %	4.1	3.9	3.3 %
BIRMINGHAM	966	863	11.9 %	35	40	-12.5 %	5.3	4.8	11.7 %
TAMPA	844	666	26.7 %	61	54	13.0 %	3.7	3.4	7.4 %
JACKSONVILLE	764	695	9.9 %	49	45	8.9 %	3.4	3.6	-5.4 %
KNOXVILLE	634	545	16.3 %	36	38	-5.3 %	3.9	3.3	15.9 %
ORLANDO	593	488	21.5 %	53	48	10.4 %	2.9	2.8	4.4 %
JACKSON	516	435	18.6 %	24	23	4.3 %	4.1	4.1	2.2 %
NASHVILLE	498	464	7.3 %	32	34	-5.9 %	3.6	3.0	21.6 %
LOUISVILLE	491	377	30.2 %	30	32	-6.3 %	3.8	3.5	9.1 %
MEMPHIS	227	210	8.1 %	22	29	-24.1 %	2.2	1.9	15.5 %
Region Total	12,161	10,520	15.6 %	180	178	1.1 %	12.4	11.7	6.3 %
Southwest									
HOUSTON	1,193	1,193	0.0 %	59	56	5.4 %	4.3	4.8	-10.8 %
SAN ANTONIO	1,106	986	12.2 %	58	49	18.4 %	3.8	3.9	-4.6 %
DALLAS	1,054	926	13.8 %	64	57	12.3 %	3.8	3.7	2.4 %
FT. WORTH	952	844	12.8 %	59	57	3.5 %	3.5	3.5	1.0 %
NEW ORLEANS	822	785	4.7 %	35	28	25.0 %	3.9	4.5	-11.3 %
LITTLE ROCK	588	481	22.2 %	32	33	-3.0 %	3.7	3.1	19.2 %
ALBUQUERQUE	446	376	18.6 %	37	36	2.8 %	2.5	2.4	6.5 %
LUBBOCK	440	453	-2.9 %	40	41	-2.4 %	2.6	2.6	-2.0 %
OKLAHOMA CITY	303	320	-5.3 %	27	25	8.0 %	2.4	3.0	-18.9 %
TULSA	302	285	6.0 %	26	23	13.0 %	2.5	2.7	-6.4 %
SHREVEPORT	242	181	33.7 %	25	20	25.0 %	2.0	1.9	8.3 %
Region Total	7,448	6,830	9.0 %	114	123	-7.3 %	11.1	11.3	-2.4 %
Grand Total	56,899	49,080	15.9 %	540	553	-2.4 %	18.3	16.7	9.2 %

Analyze your top competitors and leverage the competitive strategies that work for them. Call us for a free, no obligation, Competitive Landscape Report at (682) 651-5632.

Top 100 Lenders - Year to Date

Rank	Lender	Vol 2013	Vol 2012	Chg %	Mkt Share 2013	Mkt Share 2012	Chg %	Top State
1	SECURITY ONE LENDING/RMS	6860	3711	85 %	12.1 %	7.6 %	59 %	CA
2	AMERICAN ADVISORS GROUP	6792	3408	99 %	11.9 %	6.9 %	72 %	CA
3	LIBERTY HOME EQUITY SOLU	6489	4139	57 %	11.4 %	8.4 %	35 %	CA
4	ONE REVERSE MORTGAGE LLC	5029	4391	15 %	8.8 %	8.9 %	-1 %	TX
5	URBAN FINANCIAL GROUP	3742	3222	16 %	6.6 %	6.6 %	0 %	CA
6	PROFICIO MORTGAGE VENTUR	2403	327	635 %	4.2 %	0.7 %	534 %	CA
7	GENERATION MORTGAGE COMP	2389	2654	-10 %	4.2 %	5.4 %	-22 %	NY
8	REVERSE MORTGAGE USA INC	1465	1086	35 %	2.6 %	2.2 %	16 %	TX
9	SUN WEST MORTGAGE CO INC	813	927	-12 %	1.4 %	1.9 %	-24 %	CA
10	ASSOCIATED MORTGAGE BANK	771	405	90 %	1.4 %	0.8 %	64 %	NY
11	CHERRY CREEK MORTGAGE CO	737	726	2 %	1.3 %	1.5 %	-12 %	TX
12	MAVERICK FUNDING CORP	710	382	86 %	1.2 %	0.8 %	60 %	NJ
13	NEW DAY FINANCIAL LLC	655	686	-5 %	1.2 %	1.4 %	-18 %	CA
14	OPEN MORTGAGE LLC	602	243	148 %	1.1 %	0.5 %	114 %	CA
15	M & T BANK	571	581	-2 %	1.0 %	1.2 %	-15 %	NY
16	GMFS LLC	559	374	49 %	1.0 %	0.8 %	29 %	CA
17	MONEY HOUSE INC	483	421	15 %	0.8 %	0.9 %	-1 %	ZZ
18	HIGH TECH LENDING INC	475	205	132 %	0.8 %	0.4 %	100 %	CA
19	NET EQUITY FINANCIAL INC	436	402	8 %	0.8 %	0.8 %	-6 %	PA
20	NATIONWIDE EQUITIES CORP	380	314	21 %	0.7 %	0.6 %	4 %	NY
21	GREENLIGHT FINANCIAL SER	359	448	-20 %	0.6 %	0.9 %	-31 %	CA
22	FIRSTAR BANK NA	335	120	179 %	0.6 %	0.2 %	141 %	OK
23	SENIOR MORTGAGE BANKERS	335	431	-22 %	0.6 %	0.9 %	-33 %	ZZ
24	FIRSTBANK	323	236	37 %	0.6 %	0.5 %	18 %	FL
25	TOWNEBANK	319	236	35 %	0.6 %	0.5 %	17 %	VA
26	PLAZA HOME MORTGAGE INC	306	298	3 %	0.5 %	0.6 %	-11 %	CA
27	UNITED NORTHERN MORTGAGE	306	192	59 %	0.5 %	0.4 %	37 %	NY
28	NATIONSTAR MORTGAGE LLC	265	0		0.5 %	0.0 %		CA
29	UNITED SOUTHWEST MORTGAG	229	1	22,800 %	0.4 %	0.0 %	19,653 %	CA
30	MCM HOLDINGS INC	224	191	17 %	0.4 %	0.4 %	1 %	FL
31	ASPIRE FINANCIAL INC	219	288	-24 %	0.4 %	0.6 %	-34 %	TX
32	PEOPLES BANK	212	61	248 %	0.4 %	0.1 %	200 %	CA
33	TOP FLITE FINANCIAL INC	205	133	54 %	0.4 %	0.3 %	33 %	WI
34	CONTINENTAL HOME LOANS I	201	132	52 %	0.4 %	0.3 %	31 %	NY
35	ATLANTIC BAY MORTGAGE GR	196	197	-1 %	0.3 %	0.4 %	-14 %	VA
36	AMERICAN PACIFIC MORTGAG	191	158	21 %	0.3 %	0.3 %	4 %	CA
37	SUN AMERICAN MORTGAGE CO	183	125	46 %	0.3 %	0.3 %	26 %	AZ
38	MORTGAGESHOP LLC	175	125	40 %	0.3 %	0.3 %	21 %	VA
39	VAN DYK MORTGAGE CORPORA	172	117	47 %	0.3 %	0.2 %	27 %	TX
40	ADVISORS MORTGAGE GROUP	162	95	71 %	0.3 %	0.2 %	47 %	NY
41	UNIVERSAL LENDING CORPOR	159	130	22 %	0.3 %	0.3 %	6 %	CO
42	LEADER ONE FINANCIAL COR	157	54	191 %	0.3 %	0.1 %	151 %	SD
43	VIG MORTGAGE CORP	157	105	50 %	0.3 %	0.2 %	29 %	ZZ
44	AMERICAN NATIONWIDE MORT	155	69	125 %	0.3 %	0.1 %	94 %	TX
45	MORTGAGE SERVICES III LL	148	76	95 %	0.3 %	0.2 %	68 %	IL
46	MAS ASSOCIATES LLC	147	226	-35 %	0.3 %	0.5 %	-44 %	MD
47	SUCCESS MORTGAGE PARTNER	141	101	40 %	0.2 %	0.2 %	20 %	SC
48	AXIA FINANCIAL LLC	137	151	-9 %	0.2 %	0.3 %	-22 %	WA
49	ROYAL UNITED MORTGAGE LL	131	329	-60 %	0.2 %	0.7 %	-66 %	TX
50	STERLING SAVINGS BANK	125	111	13 %	0.2 %	0.2 %	-3 %	OR

Rank	Lender	Vol 2013	Vol 2012	Chg %	Mkt Share 2013	Mkt Share 2012	Chg %	Top State
51	HOMESTREET BANK	125	74	69 %	0.2 %	0.2 %	46 %	WA
52	SOUTHERN TRUST MORTGAGE	122	115	6 %	0.2 %	0.2 %	-8 %	VA
53	CONTOUR MORTGAGE CORPORA	121	127	-5 %	0.2 %	0.3 %	-18 %	NY
54	VANGUARD FUNDING LLC	120	112	7 %	0.2 %	0.2 %	-8 %	NY
55	CHRISTENSEN FINANCIAL IN	119	112	6 %	0.2 %	0.2 %	-8 %	FL
56	FULTON BANK NA	108	99	9 %	0.2 %	0.2 %	-6 %	PA
57	HOMEOWNERS MORTGAGE ENTE	106	30	253 %	0.2 %	0.1 %	205 %	NC
58	DOLLAR BANK FSB	106	73	45 %	0.2 %	0.1 %	25 %	PA
59	GATEWAY FUNDING DIVERSIF	105	105	0 %	0.2 %	0.2 %	-14 %	PA
60	NETWORK FUNDING LP	98	125	-22 %	0.2 %	0.3 %	-32 %	TX
61	NORTH AMERICAN SAVINGS B	93	14	564 %	0.2 %	0.0 %	473 %	KS
62	BANK OF ENGLAND	90	61	48 %	0.2 %	0.1 %	27 %	NC
63	PRIMARY RESIDENTIAL MORT	90	74	22 %	0.2 %	0.2 %	5 %	CT
64	VALUE FINANCIAL MORTGAGE	88	102	-14 %	0.2 %	0.2 %	-26 %	FL
65	GREAT OAK LENDING	87	236	-63 %	0.2 %	0.5 %	-68 %	MD
66	NEW AMERICAN MORTGAGE LL	87	93	-6 %	0.2 %	0.2 %	-19 %	VA
67	MANN MORTGAGE LLC	86	35	146 %	0.2 %	0.1 %	112 %	MT
68	EVOLVE BANK & TRUST	83	18	361 %	0.1 %	0.0 %	298 %	NY
69	FRANKLIN FIRST FINANCIAL	82	67	22 %	0.1 %	0.1 %	6 %	NY
70	DAS ACQUISITION CO LLC	82	96	-15 %	0.1 %	0.2 %	-26 %	MO
71	GUARANTEED RATE INC	81	42	93 %	0.1 %	0.1 %	66 %	MN
72	INTEGRATED FINANCIAL GRO	79	45	76 %	0.1 %	0.1 %	51 %	PA
73	JAMES B NUTTER AND COMPA	76	100	-24 %	0.1 %	0.2 %	-34 %	KS
74	RESIDENTIAL HOME FUNDING	76	40	90 %	0.1 %	0.1 %	64 %	NJ
75	FIRST PRIORITY FINANCIAL	73	40	83 %	0.1 %	0.1 %	57 %	WA
76	FINANCIAL FREEDOM ACQUIS	72	2	3,500 %	0.1 %	0.0 %	3,005 %	NJ
77	AMERICA FIRST FEDERAL CR	71	21	238 %	0.1 %	0.0 %	192 %	UT
78	WHOLESALE CAPITAL CORP	70	60	17 %	0.1 %	0.1 %	1 %	CA
79	EASTERN BANK	67	44	52 %	0.1 %	0.1 %	31 %	MA
80	SIMONICH CORPORATION	66	20	230 %	0.1 %	0.0 %	185 %	CA
81	YADKIN VALLEY BANK AND T	63	0		0.1 %	0.0 %		NC
82	HIGHLANDS RESIDENTIAL MO	62	35	77 %	0.1 %	0.1 %	53 %	TX
83	LIVE WELL FINANCIAL INC	62	72	-14 %	0.1 %	0.1 %	-26 %	NY
84	PACIFIC RESIDENTIAL MORT	62	55	13 %	0.1 %	0.1 %	-3 %	OR
85	VIP MORTGAGE INC	61	29	110 %	0.1 %	0.1 %	81 %	AZ
86	GUARANTEED HOME MTG CO I	61	37	65 %	0.1 %	0.1 %	42 %	NY
87	DIRECTORS FINANCIAL GROU	60	36	67 %	0.1 %	0.1 %	44 %	CA
88	RESIDENTIAL FINANCE CORP	60	14	329 %	0.1 %	0.0 %	270 %	NJ
89	WOLFE FINANCIAL INC	59	15	293 %	0.1 %	0.0 %	239 %	SC
90	INTEGRITY HOME LOAN OF C	58	7	729 %	0.1 %	0.0 %	615 %	FL
91	HOMESTEAD FUNDING CORP	57	47	21 %	0.1 %	0.1 %	5 %	NY
92	GEORGETOWN MORTGAGE	56	9	522 %	0.1 %	0.0 %	437 %	CO
93	THE FEDERAL SAVINGS BANK	55	1	5,400 %	0.1 %	0.0 %	4,644 %	CO
94	EXCEL MORTGAGE SERVICING	54	8	575 %	0.1 %	0.0 %	482 %	CA
95	CIRCLE MORTGAGE CORPORAT	54	40	35 %	0.1 %	0.1 %	16 %	FL
96	AMERIPRO FUNDING INC	54	8	575 %	0.1 %	0.0 %	482 %	TX
97	WCS FUNDING GROUP	53	33	61 %	0.1 %	0.1 %	39 %	DC
98	CS FINANCIAL INC	53	0		0.1 %	0.0 %		CA
99	GERSHMAN INVESTMENT CORP	53	65	-18 %	0.1 %	0.1 %	-30 %	MO
100	MEADOWBROOK FINANCIAL MO	52	19	174 %	0.1 %	0.0 %	136 %	NY

Paid Advertisement

About Reverse Market Insight, Inc.
Reverse Market Insight (RMI) is the premier provider of market intelligence and strategic advisory solutions in the reverse mortgage marketplace.

RMI is proud to serve 8 of the top 10 reverse mortgage lenders as clients and is the exclusive strategic partner of the National Reverse Mortgage Lenders Association (NRMLA) for market intelligence.

25910 Acero | Suite 140 | Mission Viejo, CA 92691
(682) 651-5632

<http://www.rminight.net>

This ad space is available!
Please contact us for a rate sheet.

Disclaimer: Although a significant effort is made to assure the accuracy and completeness of the information provided, Reverse Market Insight, Inc. makes no express or implied warranty as to the accuracy, adequacy, completeness, legality of the information. Reverse Market Insight, Inc. does not endorse any products or services advertised on this report. We also waive any liability of any loss or damage that may be incurred as a result of the use of such advertised products or services.